

# **LEGENDNX**

## **LGNXD05ADWPTZ32X**



## 5.1 MP Active Deterrence 32X PTZ

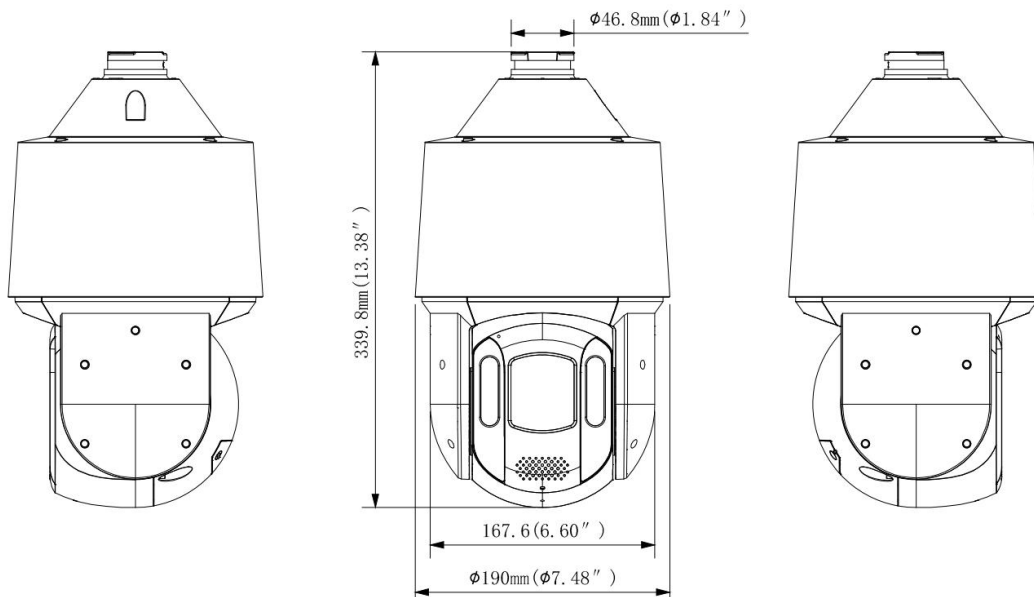
- 5MP High-Resolution Imaging
- 32x Optical zoom
- Smart target recognition of humans & vehicles powered by deep learning
- 130dB Superior True WDR Technology
- Automatic Tracking
- Up to 200m IR Range
- IP67: Water and dust resistant
- IK10: Vandal resistant
- Built-in Microphone and Audio
- Includes a wall mount support, a seismic cord, a 36V power supply with its power cord, concrete bolts, and sealing tape for a secure and durable installation.



## In short

This advanced surveillance camera features 5MP high-resolution imaging, 32x optical zoom, and smart target recognition of humans and vehicles powered by deep learning. It boasts 130dB superior true WDR technology, automatic tracking, and an IR range of up to 200m. With IP67-rated water and dust resistance, a built-in microphone, and audio capabilities, this camera ensures reliable, high-performance security in any environment.

## Dimensions



\*Design and specifications are subjects to change without notice.

## Technical Specifications

Camera: LGNXDOADWPTZ32X				
Image Sensor	1/2.8" Progressive Scan CMOS Sensor			
Minimum Illumination	Color: 0.005 Lux at F1.6, B/W: 0.0005 Lux at F1.6, 0 Lux with IR light on			
Illuminated Range	200m / 656.2ft (IR light) 50m / 164.04ft (Warm light)			
Illumination	4 IR LED, 2 Laser, 4 White light LED			
Embedded Features	Built-in Mic and Speaker, Built-in Reset Button, Smart IR Light, Illuminator (Warm Light), Red & Blue lights and sound warning for active deterrence			
External Features	DC36V with its power cord, Seismis cord, Wall mount Support, Concrete bolts and Sealing tape			
Active Deterrence LED	1 Red light and 1 Blue light			
Wavelength	850nm			
IR On/Off Control	Auto/Manual			
Shutter Time	Auto/Manual, 1/1 ~ 1/100000s			
S/N Ratio	>56dB			
Lens				
Focal Length	32x optical zoom / 16x digital zoom, 4.8 ~ 154 mm			
Aperture	F1.6 ~ F4.3			
Field of View	4.8 ~ 154 mm: Horizontal FOV: 54.4° ~ 2.3°, Vertical FOV: 41.1° ~ 1.7°, Diagonal FOV: 67.2° ~ 2.8°			
Zoom Speed	5.66s			
Focus Control	Auto, Semi-Auto, Manual			
DORI	Detection	Observe	Recognize	Identify
4.8mm	109m	43.6m	21.8m	10.9m
154mm	2500m	1000m	500m	250m
Camera Image				
Maximum Resolution	5MP (2592 × 1944)			
Frame Rate	Main Stream			
	50Hz: 25fps: 2592 × 1944, 2304 × 1728, 1920 × 1080, 1280 × 960, 1280 × 720			
	60Hz: 30fps: 2592 × 1944, 2304 × 1728, 1920 × 1080, 1280 × 960, 1280 × 720			
	Sub Stream			
	50 Hz: 25 fps (704 × 576, 640 × 480, 352 × 288)			
	60 Hz: 30 fps (704 × 480, 640 × 480, 352 × 240)			
	Third Stream			
	50 Hz: 25 fps (1920 × 1080, 1280 × 960, 1280 × 720, 704 × 576, 640 × 480, 352 × 288)			
	60 Hz: 30 fps (1920 × 1080, 1280 × 960, 1280 × 720, 704 × 480, 640 × 480, 352 × 240)			
U-code	H.265+/H.264+			
Image Calibration	Brightness / Contrast / Saturation / Hue / Sharpness			
White Balance	Supported			
Shutter Time	Auto/Manual, 1/1 ~ 1/100000s			
Day/Night	IR Cut Filter with Auto Switch			
Wide Dynamic Range	130 dB			

\*Design and specifications are subjects to change without notice.

## Technical Specifications

Digital Noise Reduction	2D/3D DNR
BLC, HLC, ROI, Starlight, On-Screen Display,	Supported
RotateX	Supported
Defog and Image Stabilization	Electronic (Electronic Image Stabilization)
<b>Compression</b>	
Video Compression	Main Stream : H.265+ / H.265 / H.264+ / H.264 Sub Stream : H.265 / H.264 / MJPEG Third Stream : H.265 / H.264
H.265 Code C Profile	Main Profile
H.264 Code C profile	Base Profile / Main Profile / High Profile
Video Bit Rate	32Kbps ~ 16Mbps
Video Stream	Triple
Audio Compression	G.711a, G.711u
Audio Bit Rate	64 Kbps
Two-way Audio	Support
Suppression	Support
Sampling Rate	8KHz
<b>Intelligent Features</b>	
Standard Event	Motion Detection, Video Tampering
Advanced Event	Advanced motion analysis, boundary crossing, zone penetration, sector access, perimeter exit (supports alarm activation based on specified target categories: person and vehicle).
Auto tracking	Support
Face Detection	Support
<b>Network</b>	
Network Storage	NAS (NFS / CIFS)
Protocols	TCP/IP, ICMP, HTTP, HTTPS, FTP, DHCP, DNS, DDNS, RTP, RTSP, RTCP, NTP, IGMP, UPnP, SMTP, UPnPPTM, P2P
System Compatibility	ONVIF (Profile S, Profile G, Profile T, CGI
Security	User Authentication, IP adress filtering, Video masking
User	40
Software	ARKIV, Legend NX
Web Browser	Live view plug-in required: IE 10, IE 11 Local Service : Chrome 57.0 and + and Firefox 52.0 and +
Mobile Surveillance	IOS, Android
<b>Hardware</b>	
Ethernet	1 RJ45 10 M/100 M self-adaptive Ethernet port
Storage	Up to 512 GB
Audio I/O	1/1
Alarm I/O	2/1

\*Design and specifications are subjects to change without notice.

## Technical Specifications

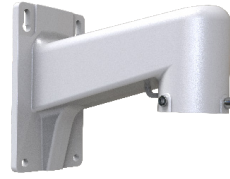
Pan and Tilt	
Viewing Angle	Pan Range: 360° endless
	Pan Speed: Configurable from 0.1° to 240°/s; preset speed: 240°/s
	Tilt Range: -15° to +90° (auto flip 180°)
	Tilt Speed: Configurable from 0.1° to 80°/s, preset speed 200°/s
Proportional Zoom	Rotation speed can be adjusted automatically according to zoom multiples
Number of Preset	255
Power-off Memory	Supported
Patrol	32 Automatic patrols
Preset Patrol	32 patrols, up to 32 presets for each patrol
Route patrol	Supported
Recorded Patrol	8 patrols, up to 128 actions for each patrol
Patrol Stay Time	15s ~ 255s
Home Position	Supported
3D Positioning	Supported
General	
Working Conditions	( -40 °C ~ 70 °C ) ( -40 °F ~ 158 °F ) Humidity 95% or less (non-condensing)
Power Supply	DC36V / PoE++ (802.3.bt)
Power Consumption	Max 30W
Power Interface	Pressed wire connectors with a spacing of 8mm
Protection level	IP67, IK10
Surge Protection	6000V lightning protection, surge protection and anti-surge protection
Dimensions	φ190 × 339.8mm (7.48" × 13.38")
Weight	7650g / 16.86 lb

\*Design and specifications are subjects to change without notice.

# The camera comes with



36V Power supply  
(With Power cord)



PTZ Wall mount support

**NOTE:** It also includes a seismic cord, concrete bolts and sealing tape.

## What you may need



**XLGNXC1A4**  
Pendant Mount for NX PTZ  
225 mm × 182 mm × 97.3 mm



**XLGNXPC1B5**  
Corner Mount Bracket for NX PTZ  
194 mm × 184.8 mm × 104.1 mm



**XLGNXPJ**  
Junction Box with door and  
hinges for NX PTZ  
309.9 × 194 × 92.1mm



**XLGNXC2A1**  
Pendant Mount Bracket for NX PTZ  
Φ116 × 52mm



**XLGNXKA3**  
NX PTZ Keyboard  
327mm x 180mm x 126mm

\*Design and specifications are subjects to change without notice.